



# MIPAR

Image Analysis Software

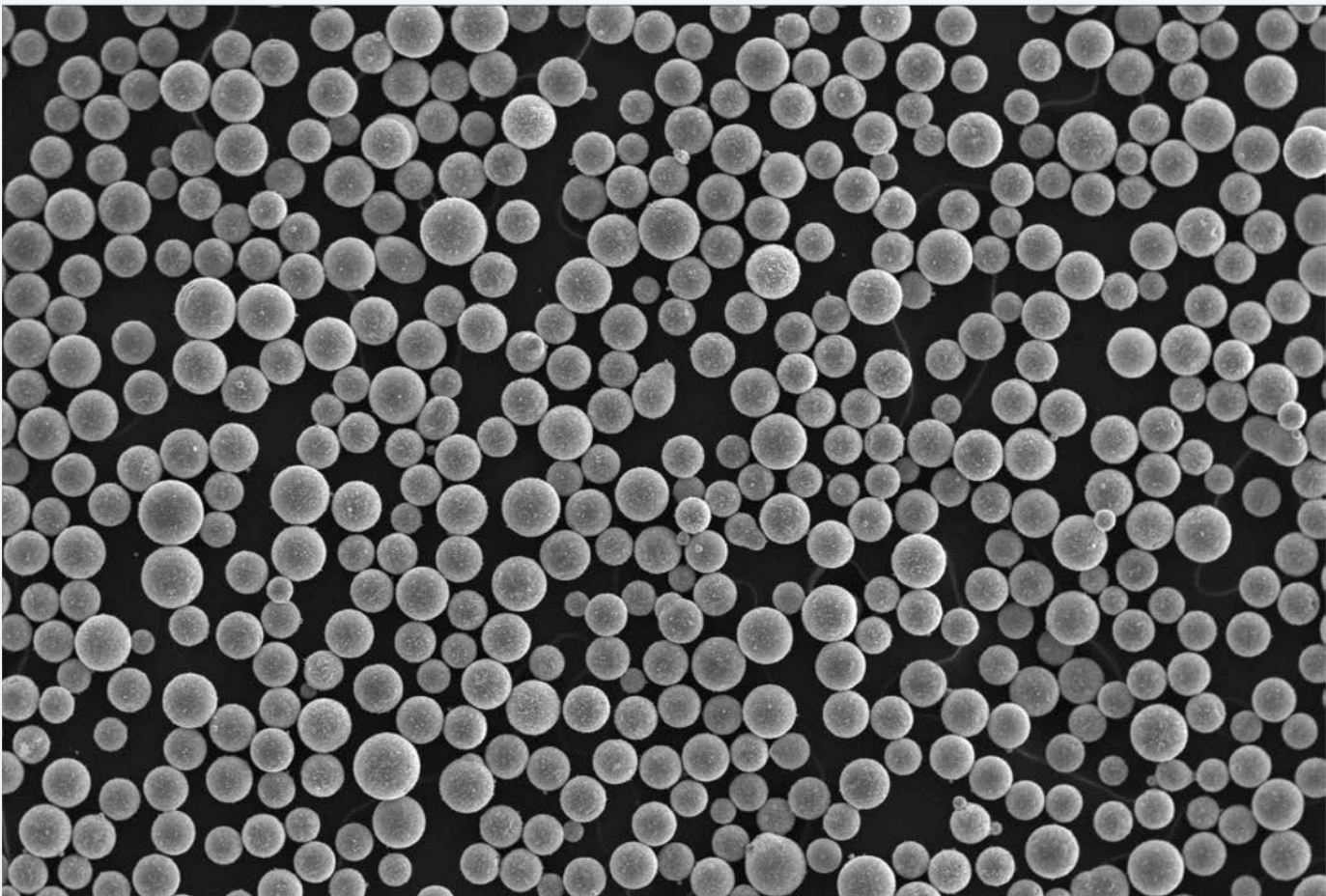
---

## Particle & Fiber Analysis Demo

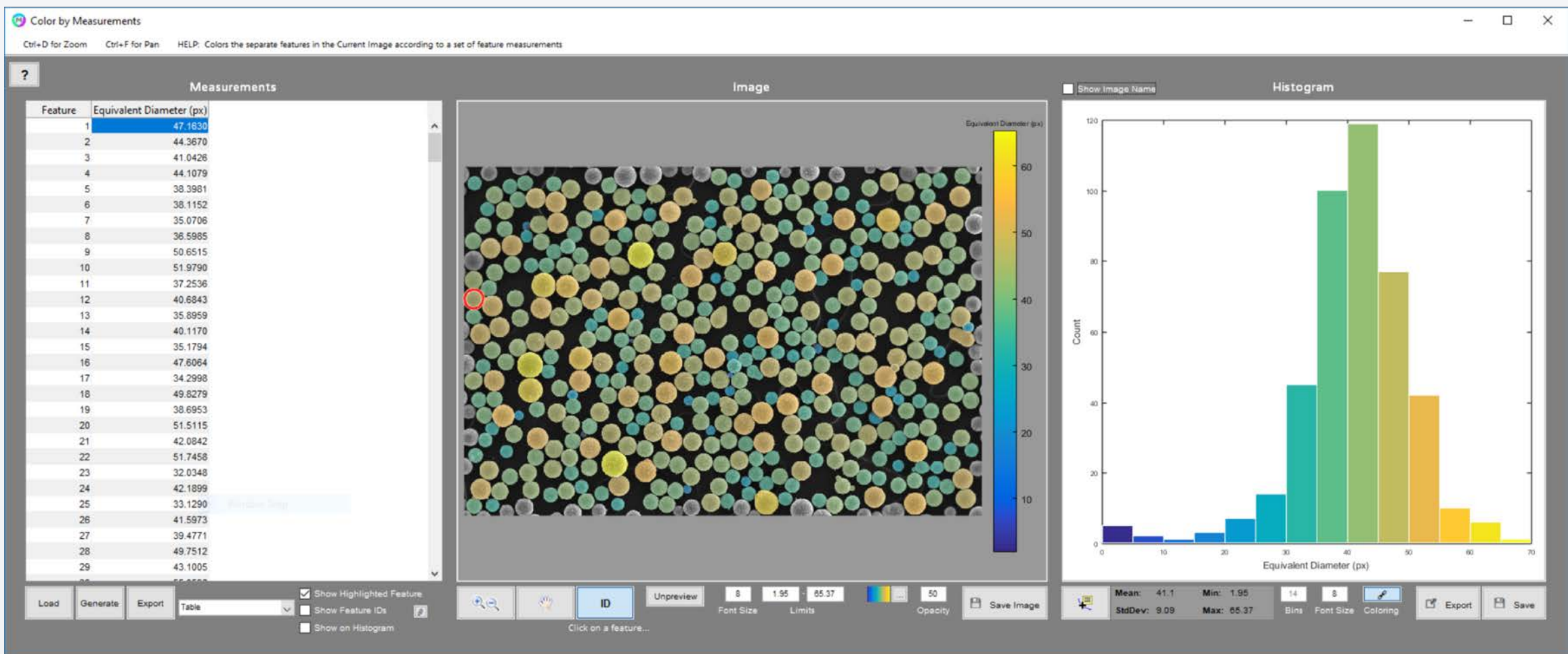


# Particle Analysis

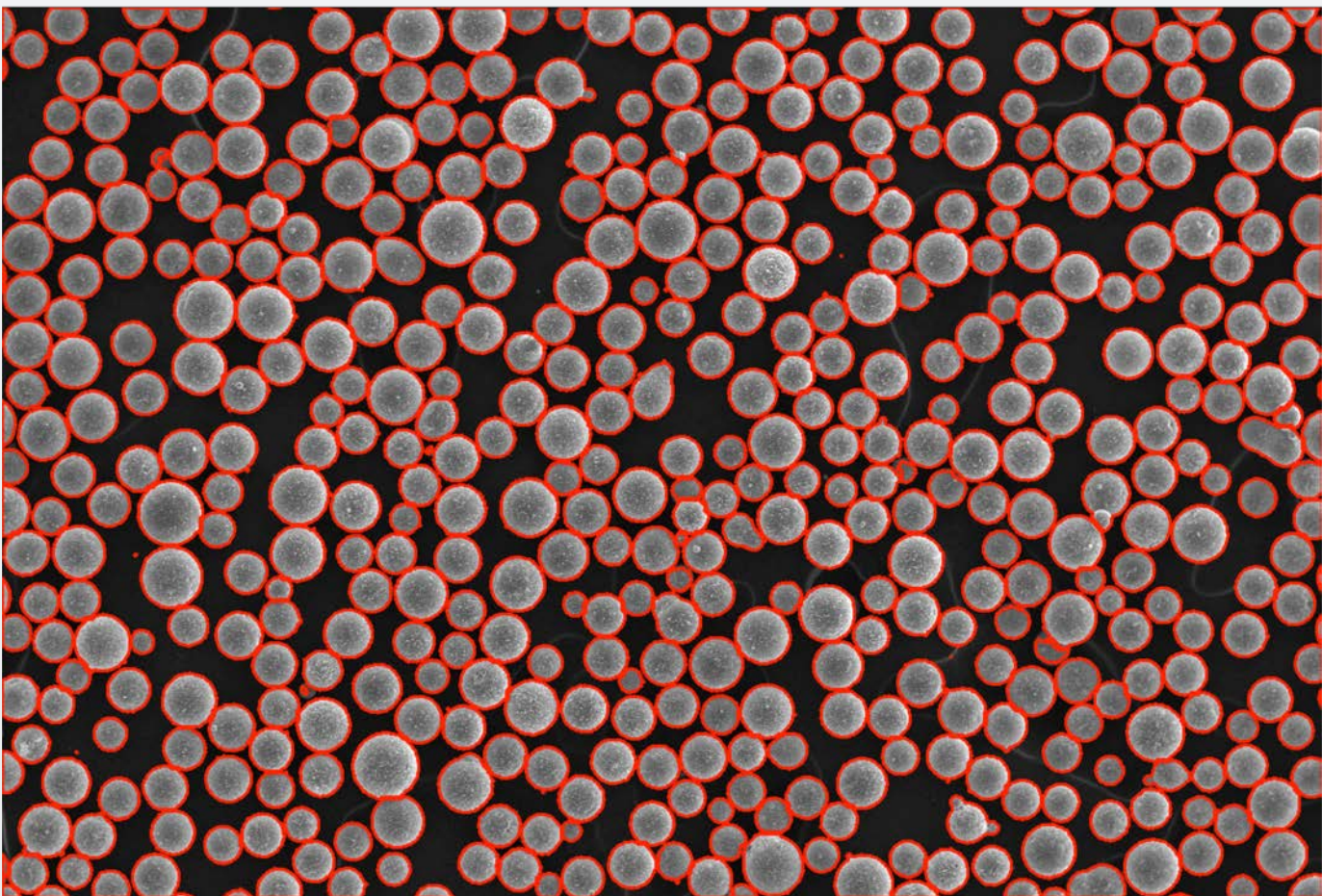
Original



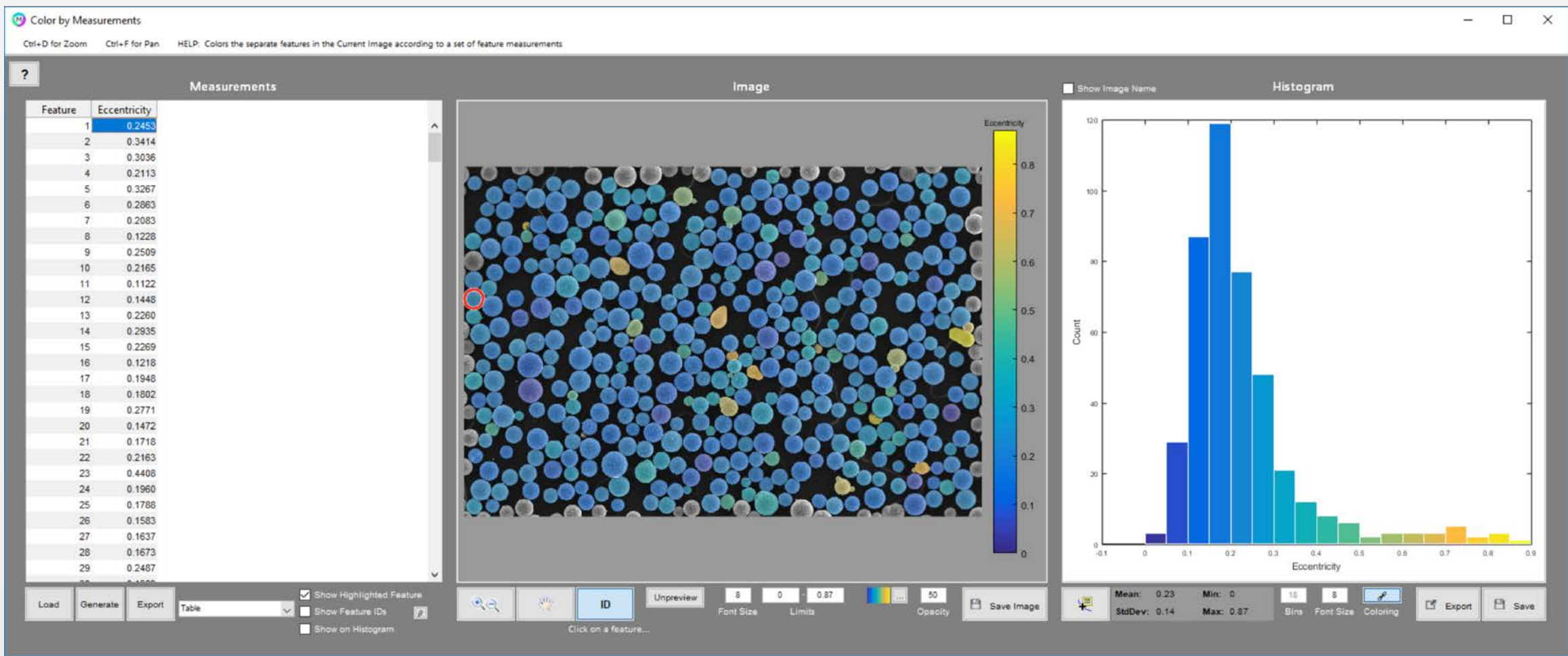
Size Measurement



Identified Particles



Shape Measurement

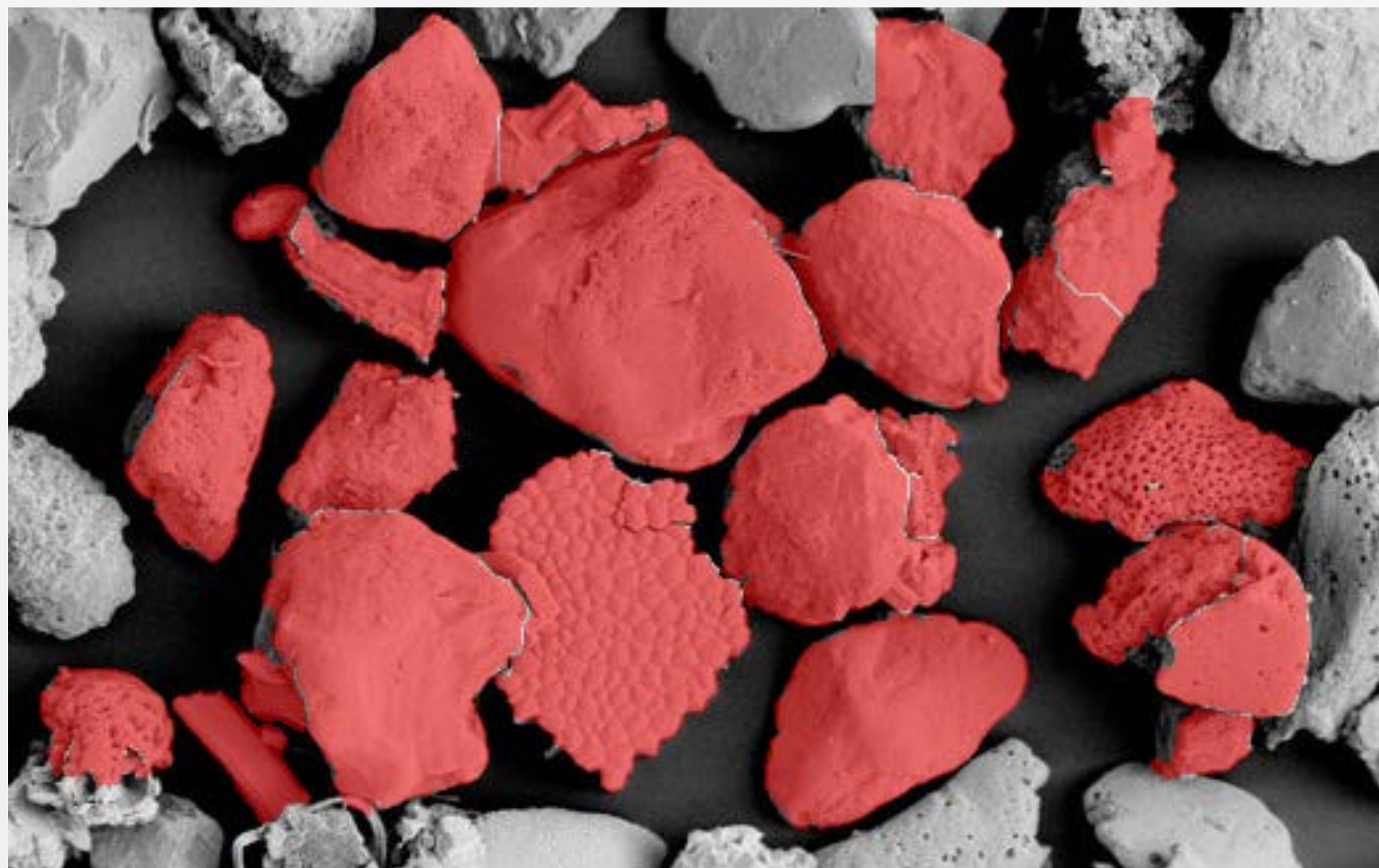


SEM Image of Particles is Segmented and Characterized by Size (Diameter) and Shape (Eccentricity)



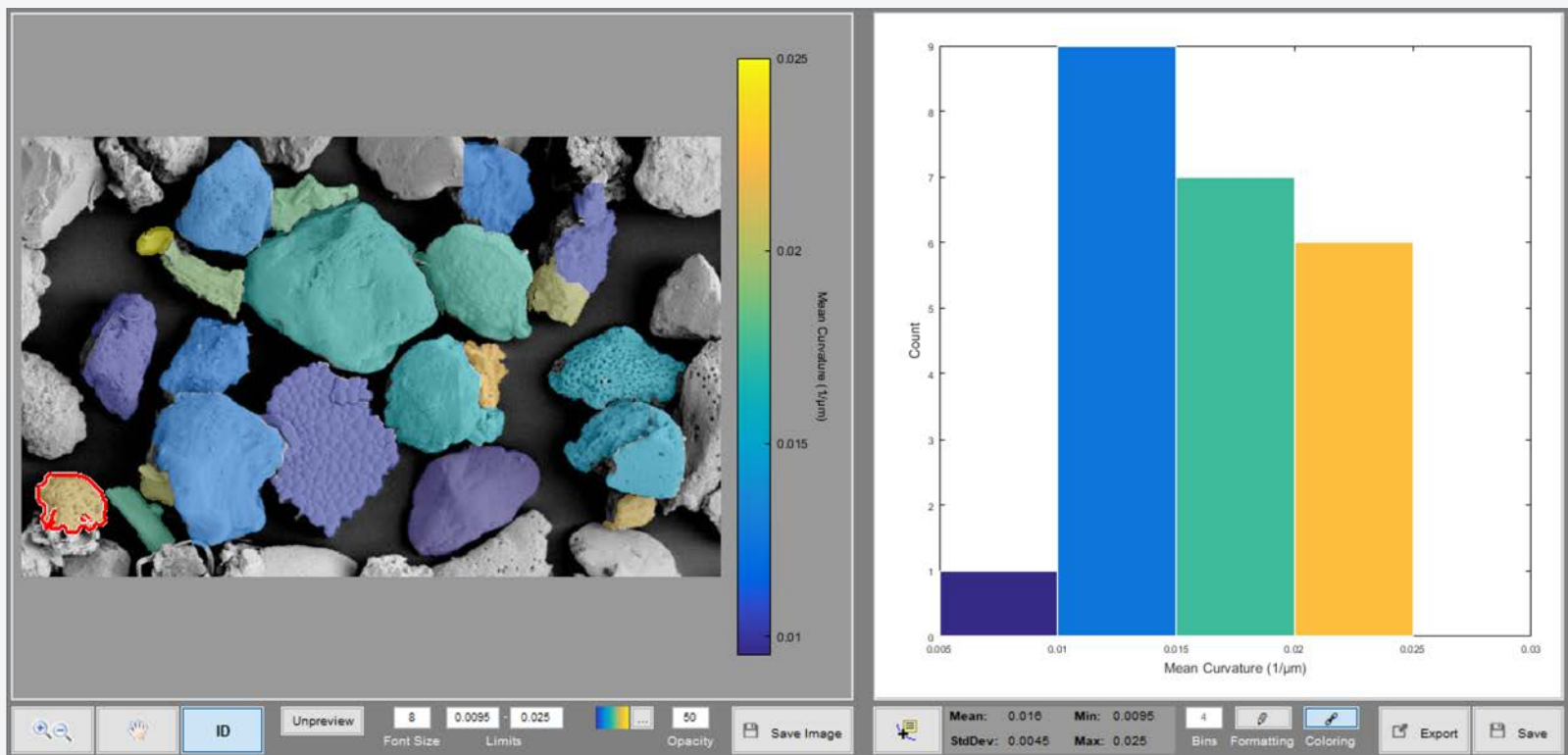
# Particle – Shape Analysis

Identified Particles



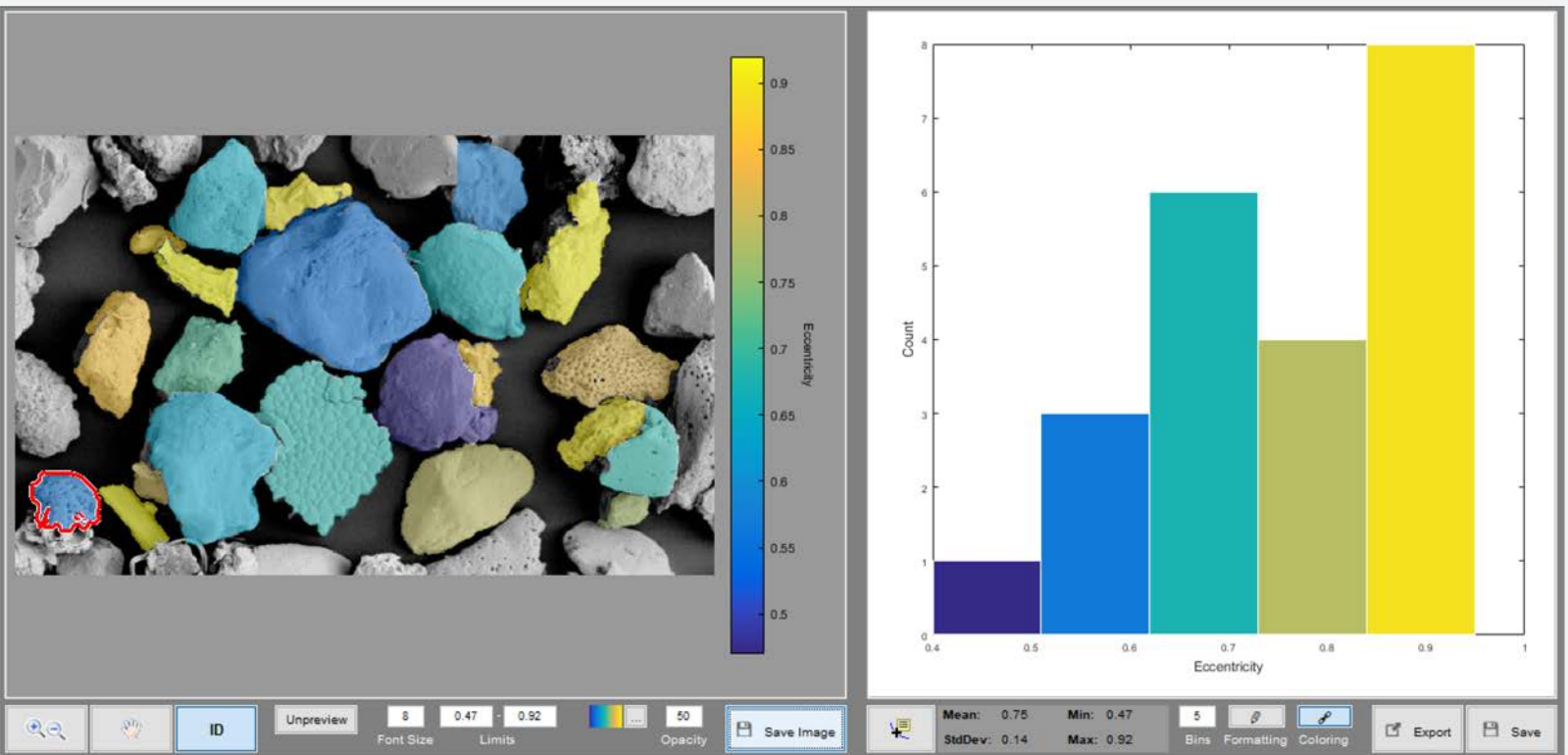
## Curvature

Mean Local Curvature  
Dark – Concave Surface Features  
Light – Convex Surface Features



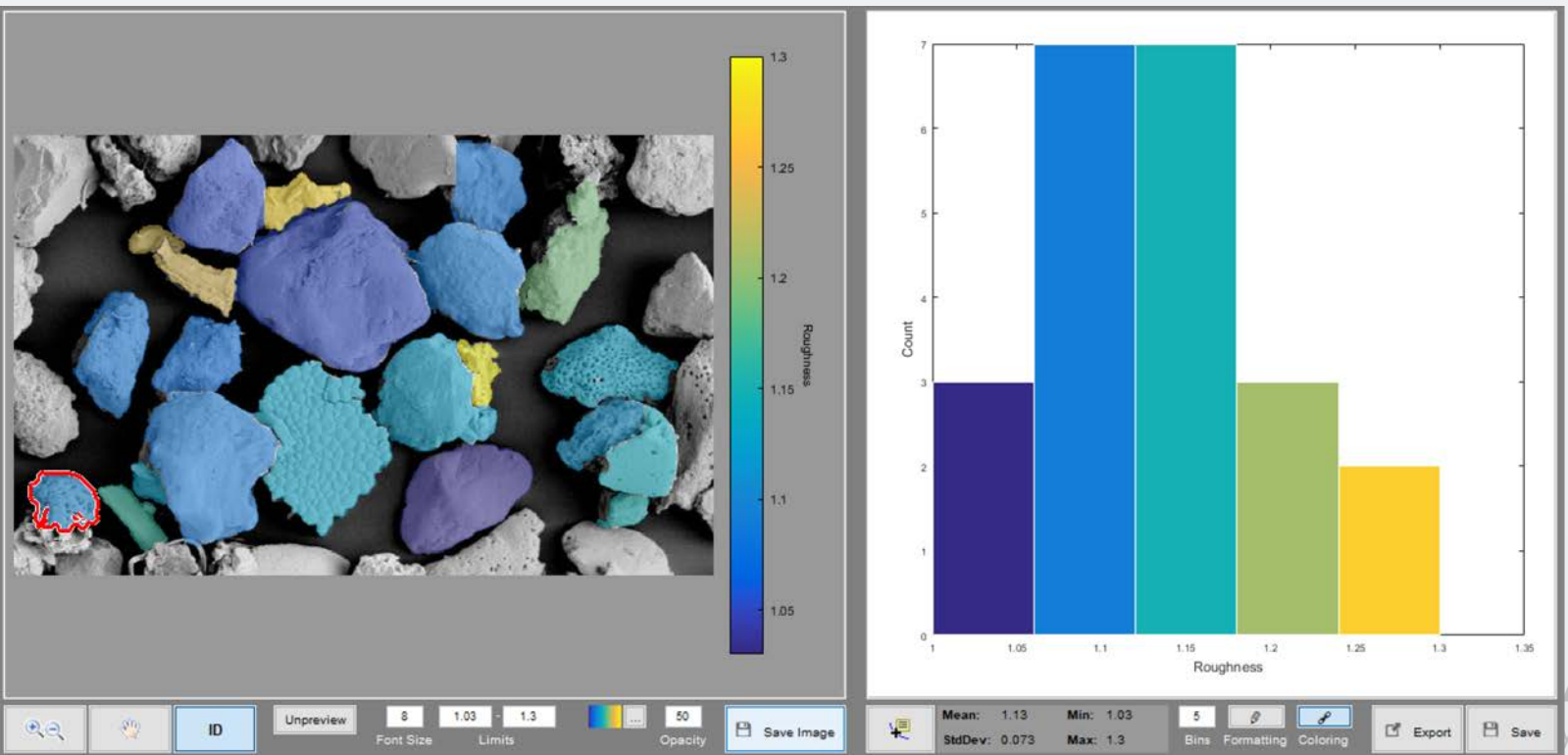
## Eccentricity

Feature Eccentricity  
Dark – Round  
Light – Elongated



## Roughness

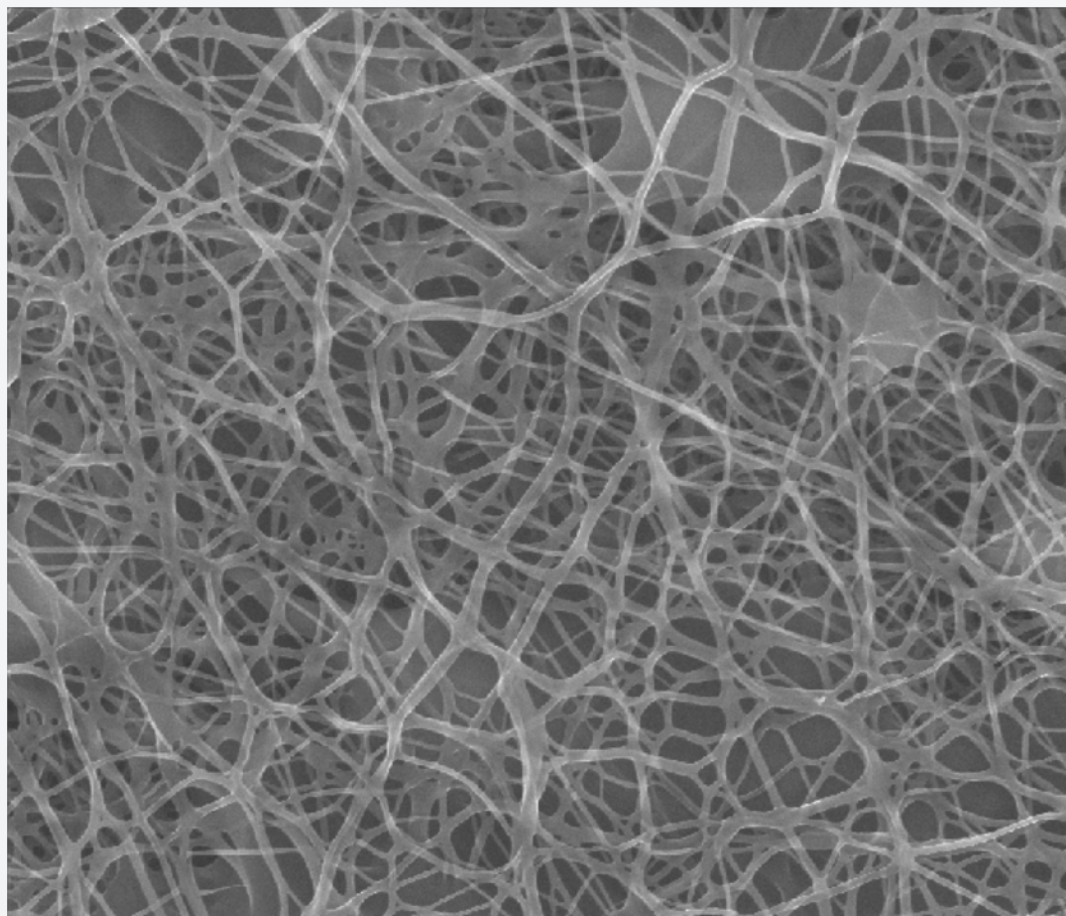
Feature Roughness  
Dark – Low Surface Variation  
Light – High Surface Variation



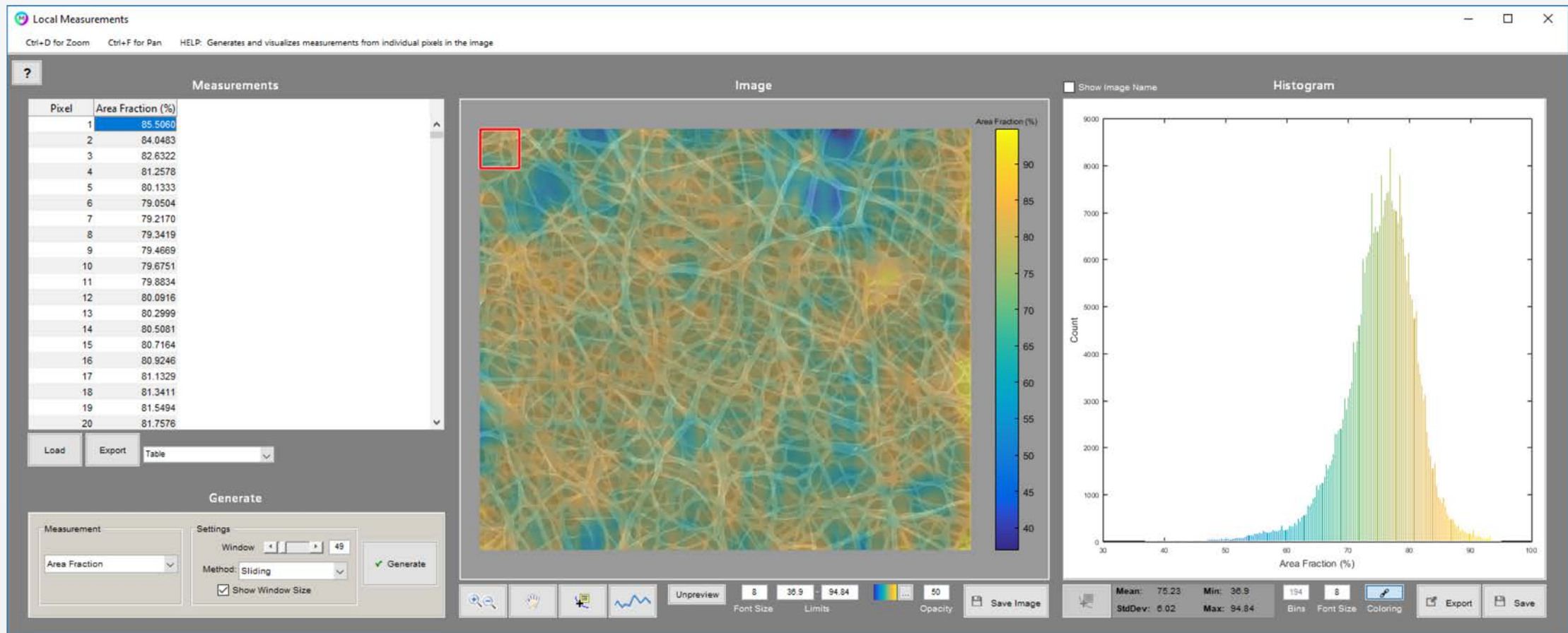


# Fiber Analysis

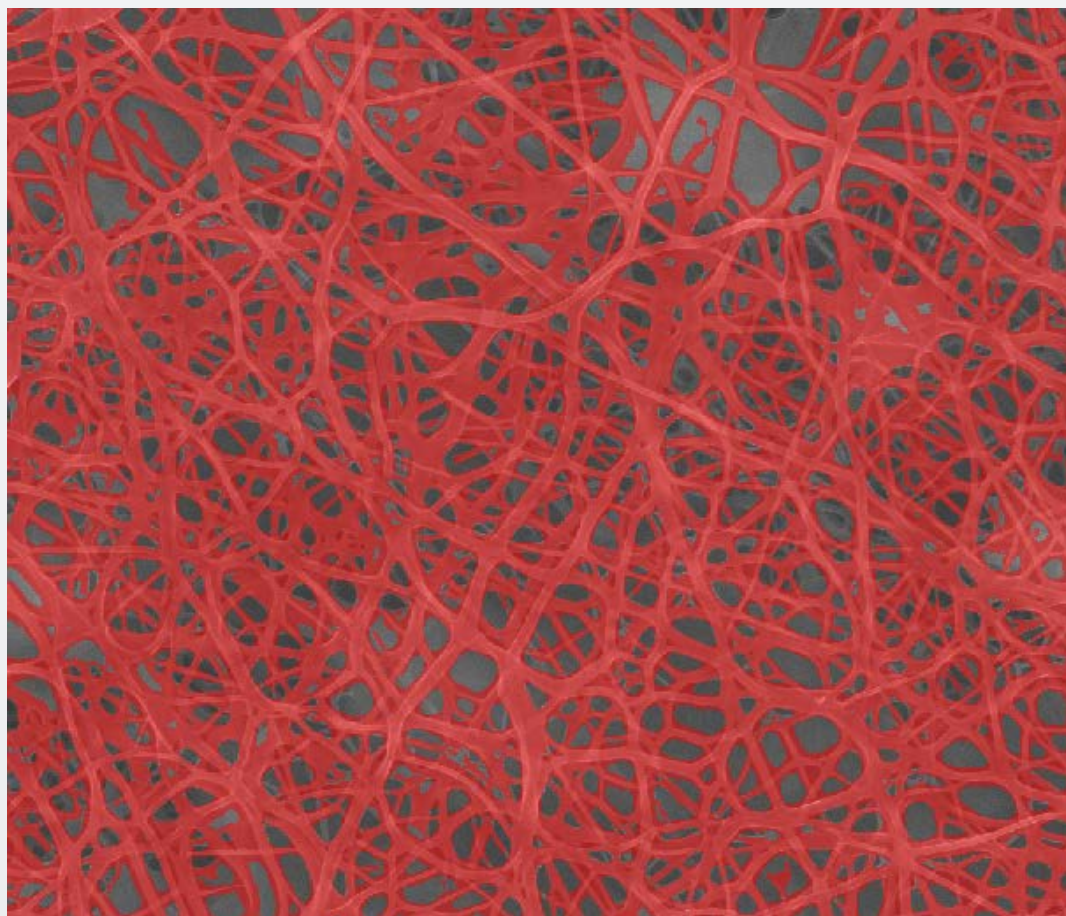
Original



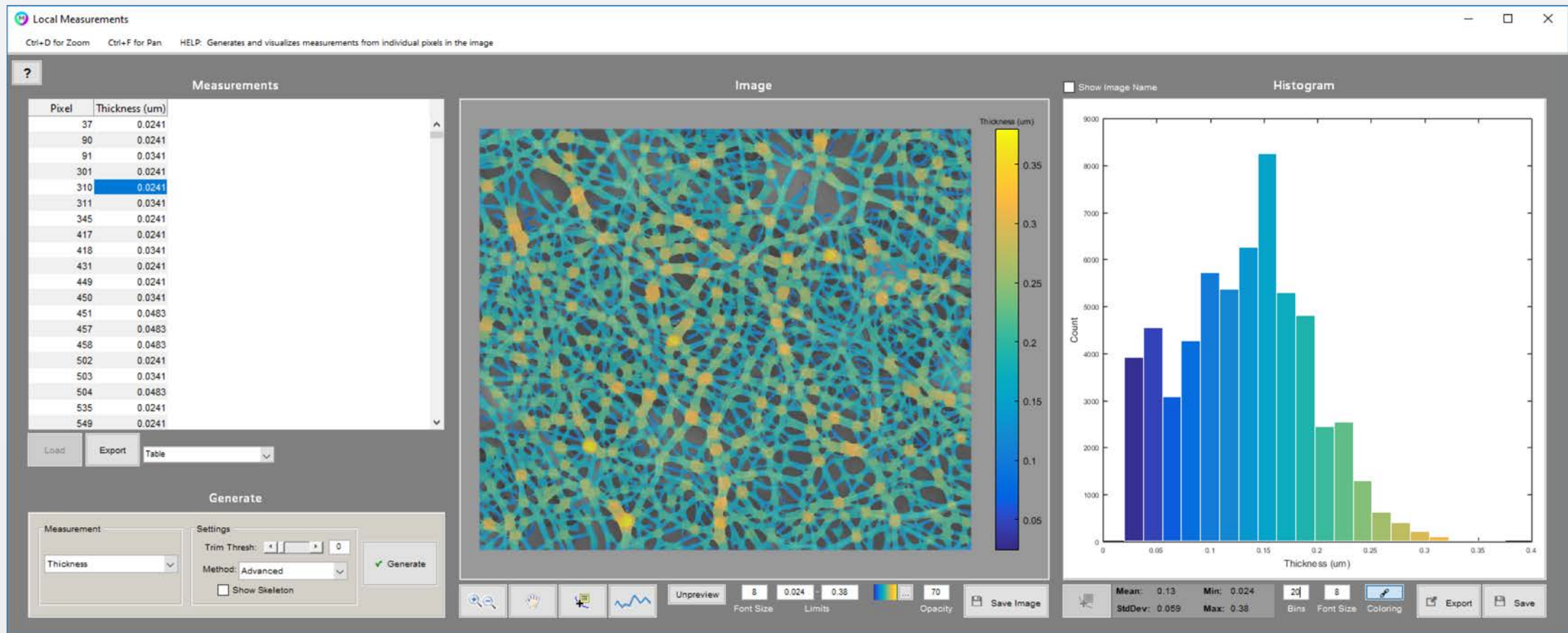
Local Fiber Density



Identified Fibers



Fiber Thickness Variation



SEM Image of a Fiber Network is Segmented and Characterized by Local Fiber Density and Local Fiber Thickness